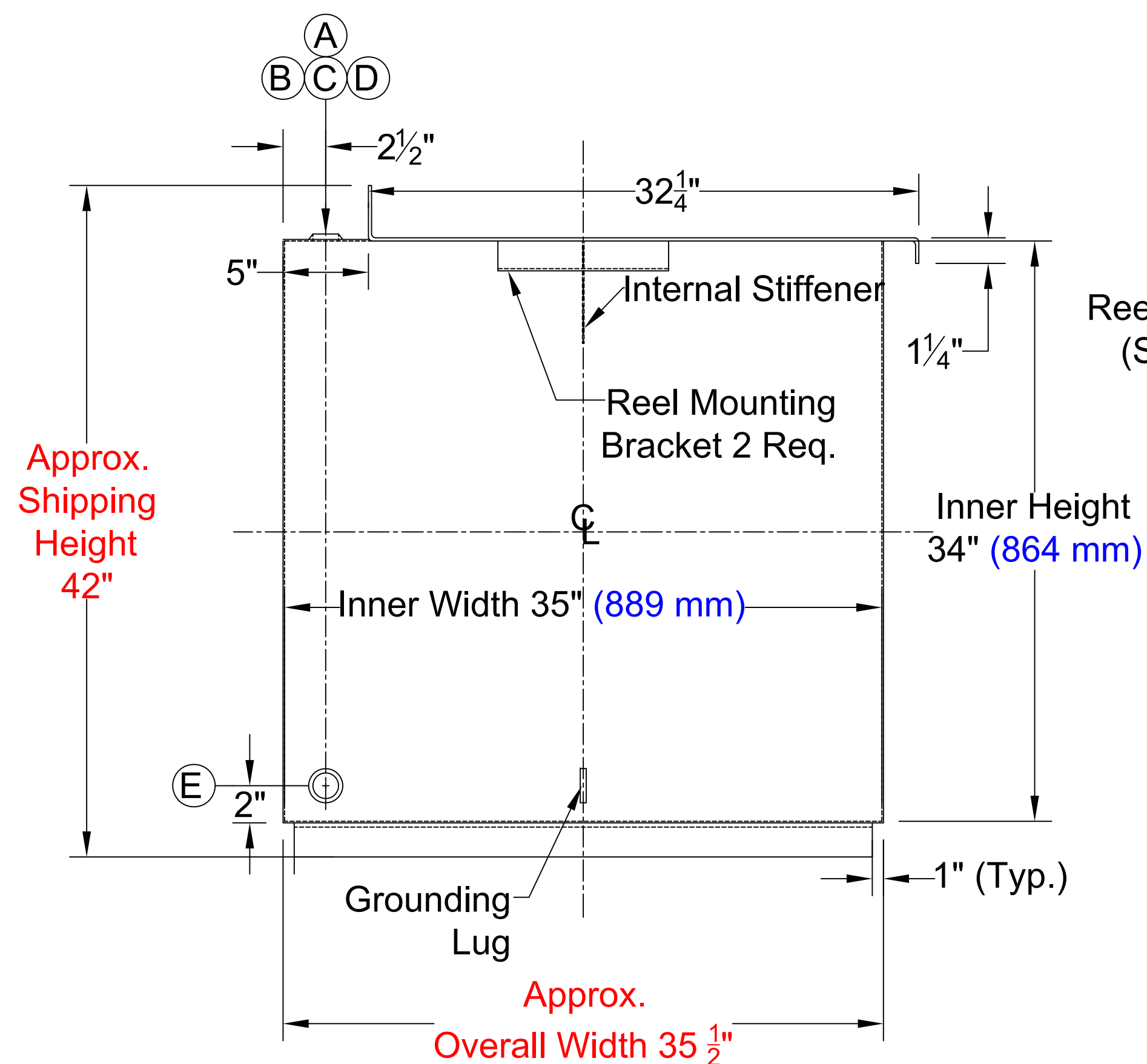


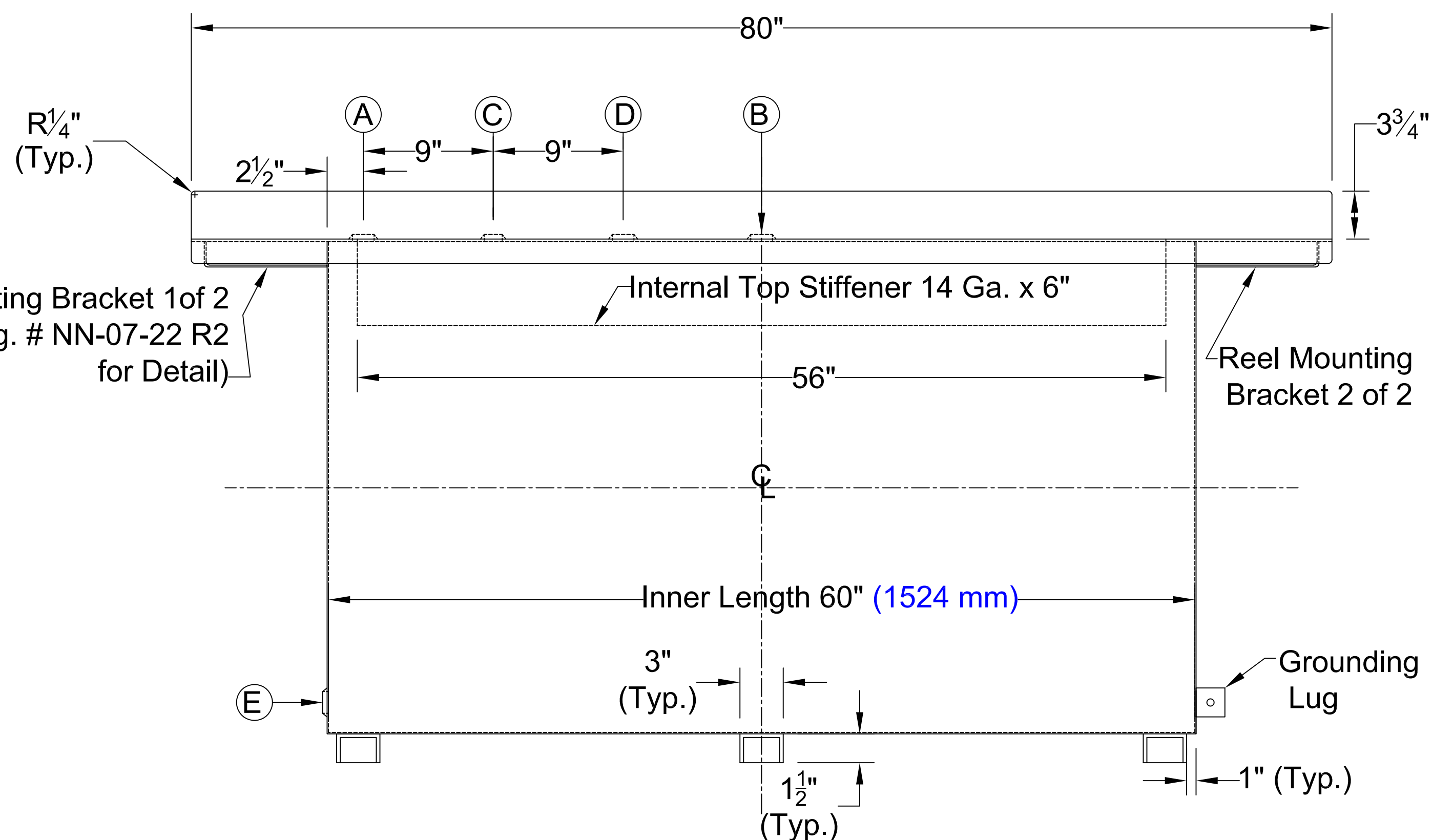
Item	Qty.	Description
A	1	2" Dia. (NPT.) Weldin Flange.
B	1	2" Dia. (NPT.) Weldin Flange.
C	1	1½" Dia. (NPT.) Weldin Flange.
D	1	2" Dia. (NPT.) Weldin Flange.
E	1	1½" Dia. (NPT.) Weldin Flange with Steel Plug (Drain)

Material Thickness (A1011 OR Equal)	
Top	0.177" Min.
Sides	0.115" Min.
Bottom	0.115" Min.

Additional Information
Approx. Empty Tank Weight - 275 Kg.
Test Pressure - 35 kPa.
95% Fill Capacity - 1,112 Litres
Max. Operating Pressure - 7 kPa.
Max. Operating Vacuum - 300 Pa.




End View



Elevation View

Notes:

- The nominal inside dimensions shown are the Minimum dimensions required to be provided for nominal capacity. Actual capacity shall be not less than nominal capacity but not more than nominal capacity plus 2½%
- Fabricated in accordance with ULC - S601-14 with ULC Label Affixed to Tank.
- Material - Steel sheet A1011 or Equal
- Channel Support to be Welded to Tank Bottom.
- Exterior to be Blasted in Accordance to SSPC SP.6, Coated with Epoxy Primer and Top Coat with White Urethane Paint.
- All Joints and Welds as per CAN/ULC S601-14.

 <small>STRUCTURAL TANK EQUIPMENT & MAINTENANCE (CANADA) LIMITED</small> <small>The information contained in this drawing is the sole property of STEM-CAN. Any reproduction in part or as a whole without the written permission of STEM-CAN is prohibited.</small>	DESCRIPTION		
	1170 LITERS SINGLE WALL WORKBENCH TANK		
CUSTOMER	DRAWING NO.	REV.	
	DR-0925-A-23	0	
SALES ORDER	DRAWN	DATE	TAG:
008404	AB	SEP. 25, 23	
	CHECKED	DATE	SCALE: NIL
	DR	SEP. 25, 23	SHEET: 1 OF 1